

Learning Tools Interoperability

Mahoodling in 2017

catalyst 

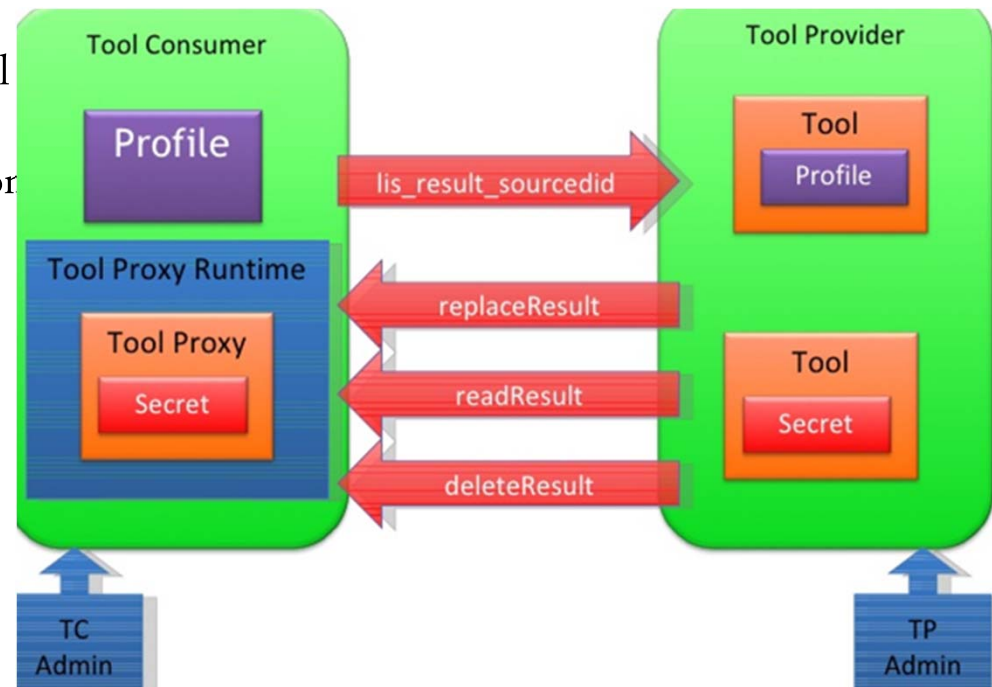
open source technologists

LTI makes it all easy.....

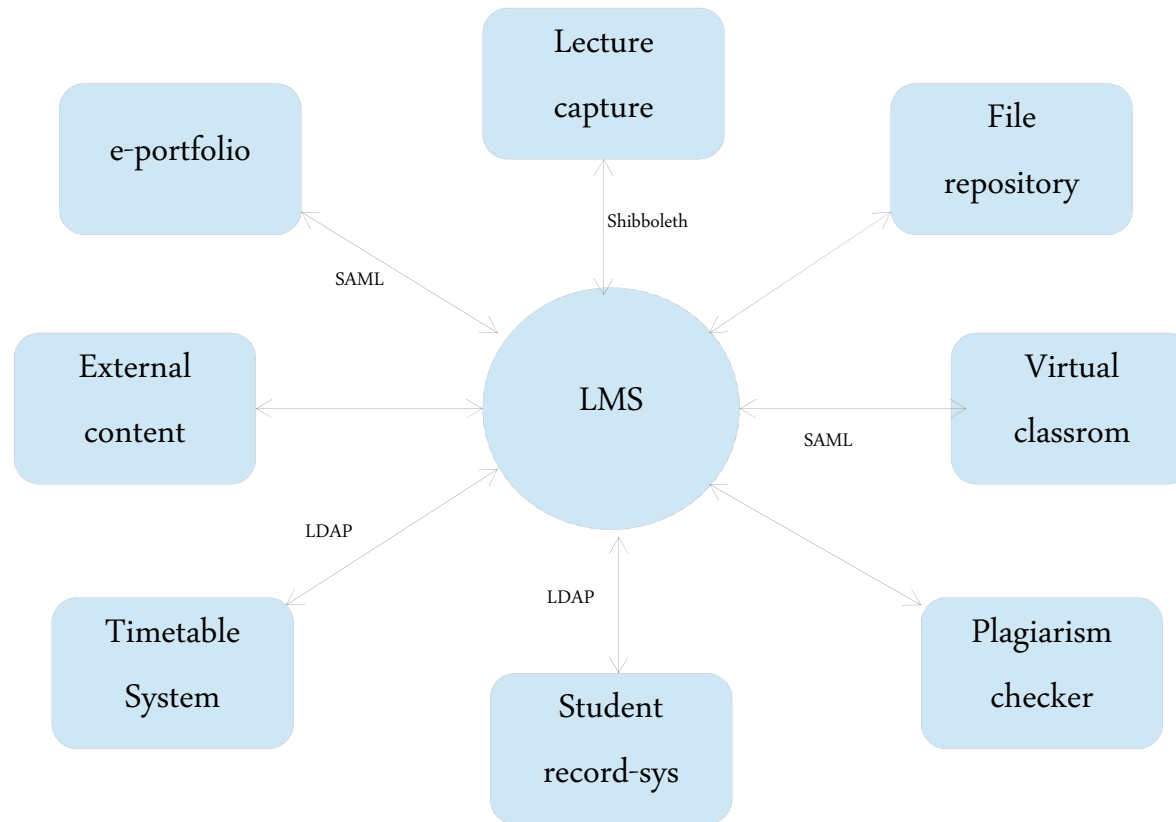
- Once it is enabled on your LMS or other services.
- Once you've tried it a few times.
- Once you have a clear use case for it.
- Once you find some things you wish to share/integrate, provide or consume.

What is the LTI Standard?

- LTI = Learning Tools Interoperability
- LTI is an open standard created by LMS Global
- LTI establishes trust between a single application
- course) and an external tool (e.g. Mahara).



The VLE landscape



The hard bit.... (*maybe*)

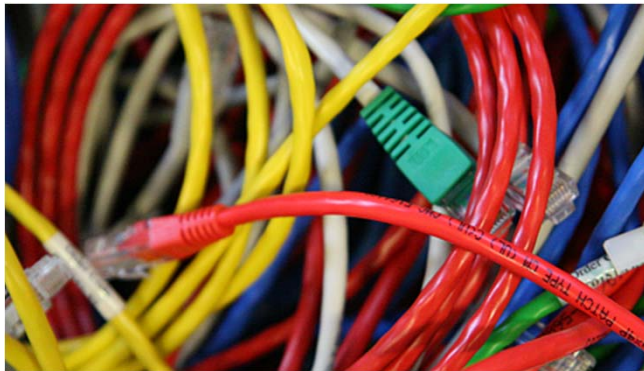
- IT team must enable a some number of plugins.
- Proxies, firewalls, redirect behaviours.

 > [Site administration](#) > [Plugins](#) > [Authentication](#) > LTI

 > [Site administration](#) > [Plugins](#) > [Enrolments](#) > Manage enrol plugins

Use Cases

- Sharing and collaboration across multiple LMS
- Building a dispersed but rich VLE (with simple SSO)
- Replacement of MNET (Mahoodle)



The LTI Mahoodle Roadmap

- Mahara assignment plugin for Moodle to utilise LTI.

<https://blueprints.launchpad.net/mahara>

- [Roadmap proposal](https://wiki.mahara.org/wiki/Developer_Area/Specifications_in_Development/MNet_replacement/LTI_implementation#Proposal_for_initial_implementation)

https://wiki.mahara.org/wiki/Developer_Area/Specifications_in_Development/MNet_replacement/LTI_implementation#Proposal_for_initial_implementation

Who's hungry?



Joey Murison

Joey.murison@Catalyst-eu.net